

QOMO

INTERACTIVE WHITEBOARD



Owner's Manual

Table of Contents

What's In The Box	2
System Requirements.....	3
Introduction.....	4
Software Features	5
How to Install Hardware.....	6
How to Install Software	15
How to Use Annotation Software.....	20
Troubleshooting Guide	21
Interactive Whiteboard User Tips	23

What's In the Box

Thank you for your purchase of the Interactive whiteboard. If any items are missing or damaged, please contact your authorized reseller immediately.

CONTENTS:

White Board * 1 pc	Writing Pen *1 pc
USB Cable 24 ft (7.5m) * 1 pc	Erase * 1 pc
Installation CD * 1 pc	Floor Stand (Optional) *1 set
Warranty Card * 1 pc	Castor (Optional) * 1 set
Pen Tray (Optional) * 1 pc	Wall-mounting Bracket (Optional) * 1 set

System Requirements

Lowest Environmental Requirements:

- CPU: 500MHz×86
- Memory: 256M
- Display Card: Support 256 or above
- Hard Disk: 500M
- Screen Display Resolution: 800×600、1024×768、1280×1024
- USB1.1 port

Recommended:

- CPU: 1GHz×86
- Memory: 512M or above
- Display Card: Support 256 or above
- Hard Disk: 1000M
- Screen Display Resolution: 1024×768 、 1280×1024
- USB port

Software Running Environment:

- Microsoft Windows 2003/XP/VISTA/7 (32bit&64bit)

Introduction

The Interactive whiteboard uses infrared technology. Working seamlessly with a projector and computer, the Interactive whiteboard provides more convenient, interactive and effective presentations. Perfect for school auditoriums, conference rooms, trade shows, symposiums and lecture halls. Users can write on the screen using the included pens, wand or the user's finger.

- **Writing:** Write, draw and perform mouse functions with your finger. The whiteboard displays your penmanship instantaneously.
- **Annotating:** The user can operate and annotate over any computer applications, or save notes directly into Flow! Software, including PowerPoint, Word, Excel, MPEG JPEG, AVI and etc.
- **Interacting:** In video conferencing, both parties can share data and write in real time just like a standard conference room. Once integrated with Polycom or other video conferencing systems, using Interactive whiteboard can improve video conference results and efficiency. The system can support up to 40 writing locations.
- **Touch System:** The Interactive whiteboard is sensitive to pressure and can be used as a high-resolution interactive white board.
- **Touch Recognition:** Can recognize touch of a single-finger, multi-finger, right-click, left-click and double click.
- **Hot Keys:** Hot keys located on opposite ends of the boards provide quick access to frequently used keys.
- **Energy conservation:** Controls energy cost within 0.5W. No need for additional power supply.

Software Features:

- Designed for teaching and conference systems.
- The screen display is high light and low glare.
- Saves images in Vector image format. Vector images take up less storage space and makes file transferring easier and faster
- Users can customize pen type, line width, and color schemes to fit Their individual preferences.
- Powerful screen functioning supports real-time editing
- Graphic tools allow users to choose a background, input Graphics and images.
- Paintbrush pen is pressure sensitive
- Writing file allows for easy conversion to many other formats such As PDF, JPG, GIF, PNG, TIFF, BMP, etc.
- Graphic tools and Hot Keys allow users to choose a pen to annotate, or use as a mouse control.
- Supports other application software.

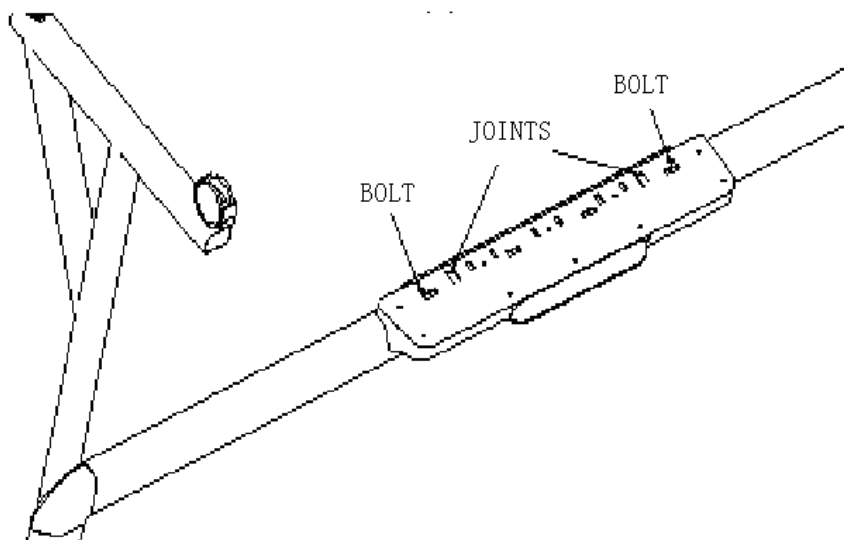
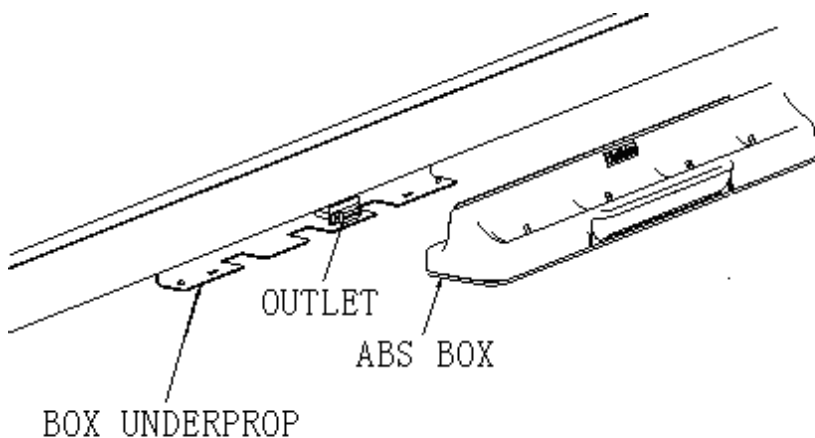
Note: The projection area is outlined at the upper left and lower right corner of the board using these icons (“┌”、“└”）. Please project onto this area for best results.

How to Install Hardware

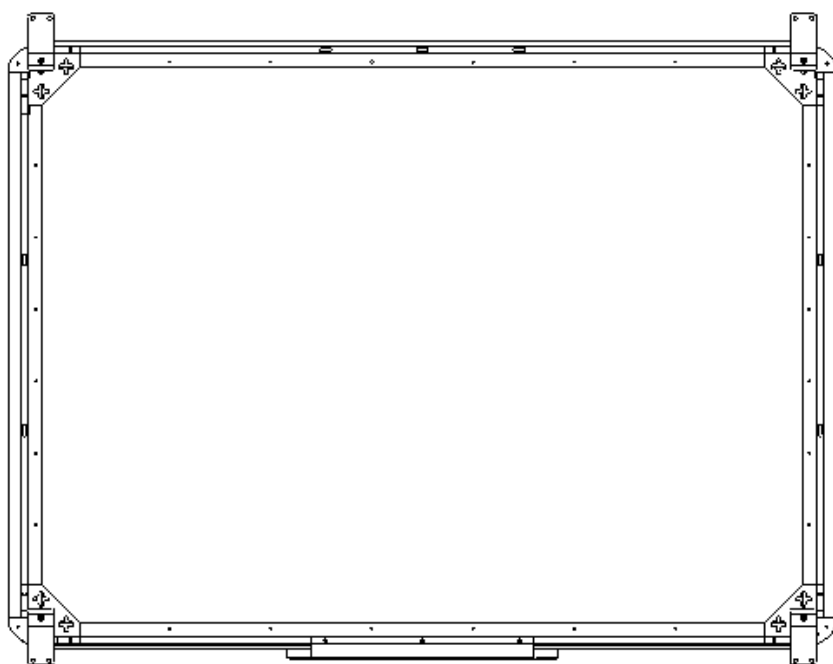
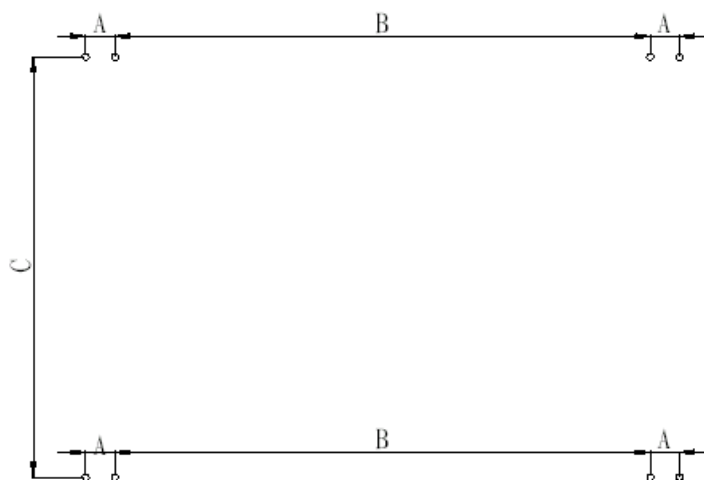
1. How to install QWB56,200,300,105WS hardware



Install Pen Tray: In the frame of the board, prior to securing the pen tray you will find a slot that accommodates a Kensington lock. If you would like to use a Kensington lock insert and loop the cable through the center hole on the frame, position the pen tray in line with the four screws, and then screw the pen tray in place. (Shown below)

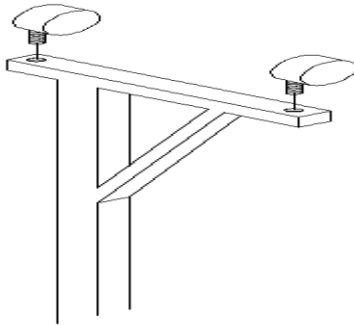


Install Wall-mounting: Set desired height according to user's preferences. Using the wall-mounting brackets as a template, place the 8 stilettos on the wall and screw bolts into each hole. Align the wall-mounting brackets onto the bolts and tighten the bolts. Check that each location hole faces each corresponding bolt and hang the white board to the wall. (As shown below)

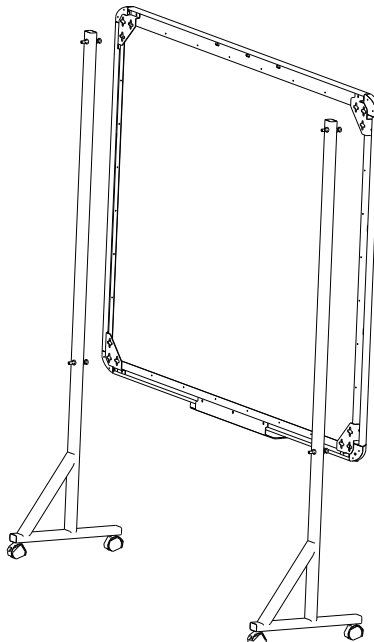


Install White Board on a Floor Stand:

(1) Lock all four casters in the down position (as shown)



(2) With an assistant's help, hang Interactive whiteboard on the floor stand by lowering the two bolts onto the top hooks and securing the bottom bolts into the bottom hooks. There are two heights for hanging according to user's preferences. (as shown below)

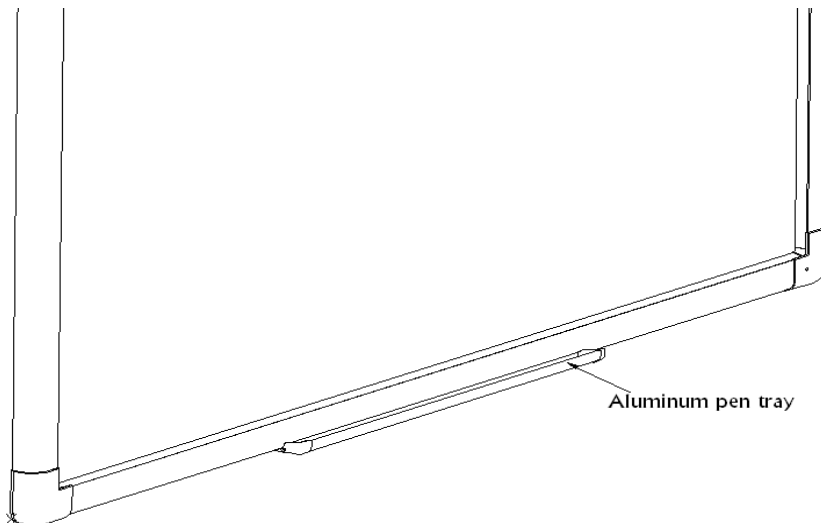


2. How to install QWB200 SLIM / 300 SLIM hardware

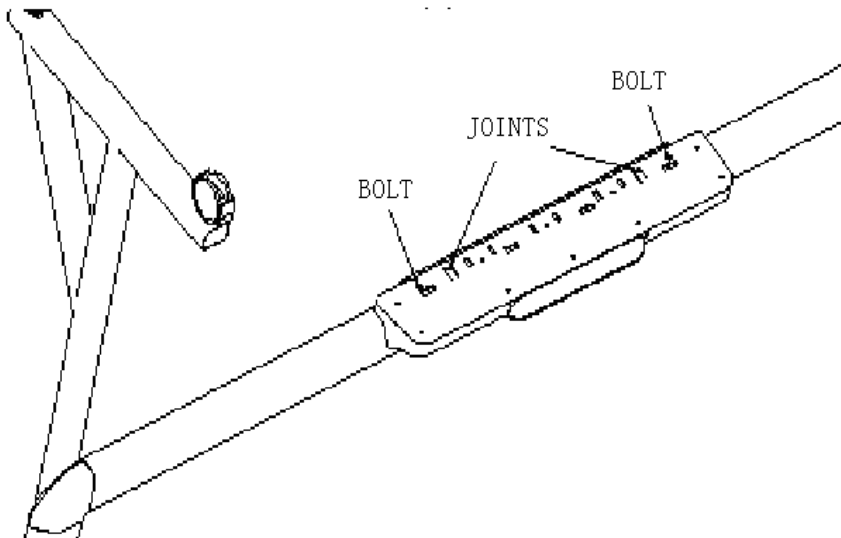
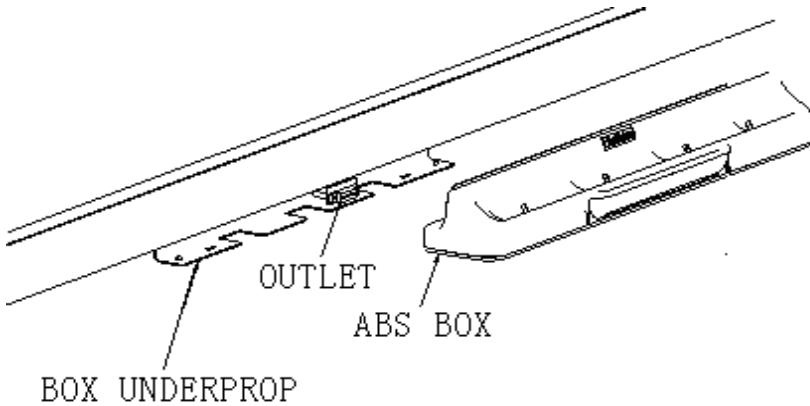


Install Securing Pen Tray:

80"/ 92" with aluminum pen tray: Install aluminum pen tray at the bottom of the interactive whiteboard (with the screws at the bottom of the back of the interactive whiteboard) shown below:

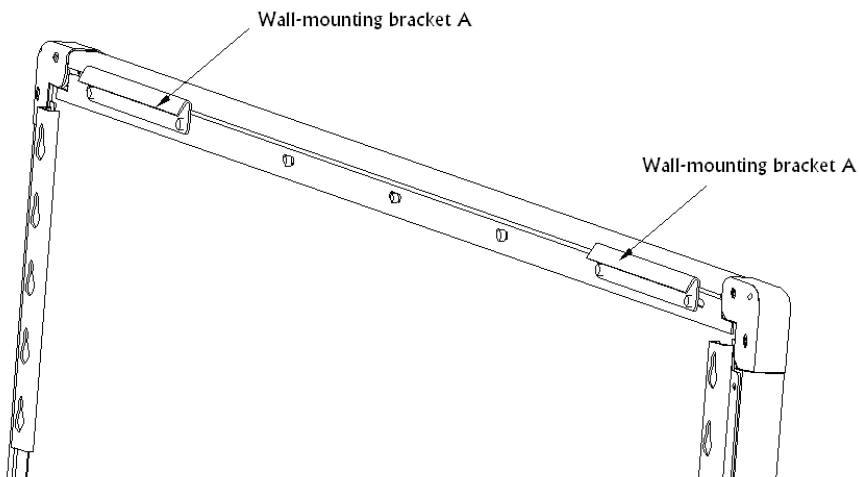


80"/ 92" with pen tray: In the frame of the board, prior to securing the pen tray you will find a slot that accommodates a Kensington lock. If you would like to use a Kensington lock insert and loop the cable through the center hole on the frame, position the pen tray in line with the four screws, and then screw the pen tray in place. (Shown below)

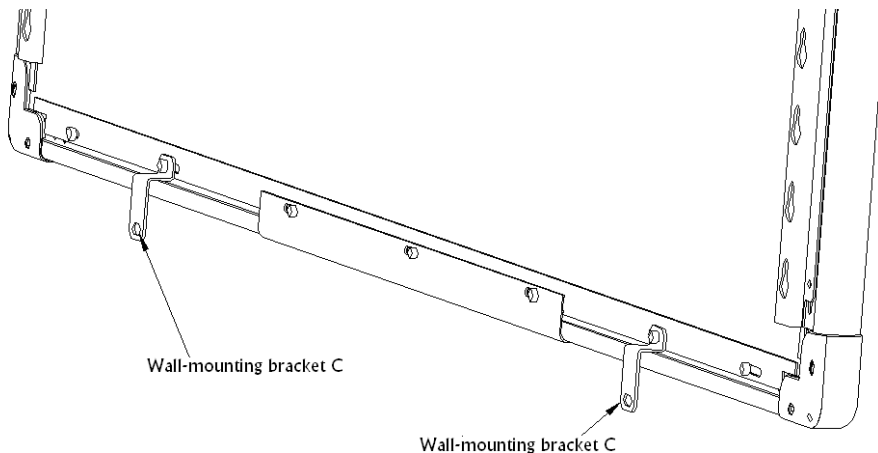


Install Wall-mounting:

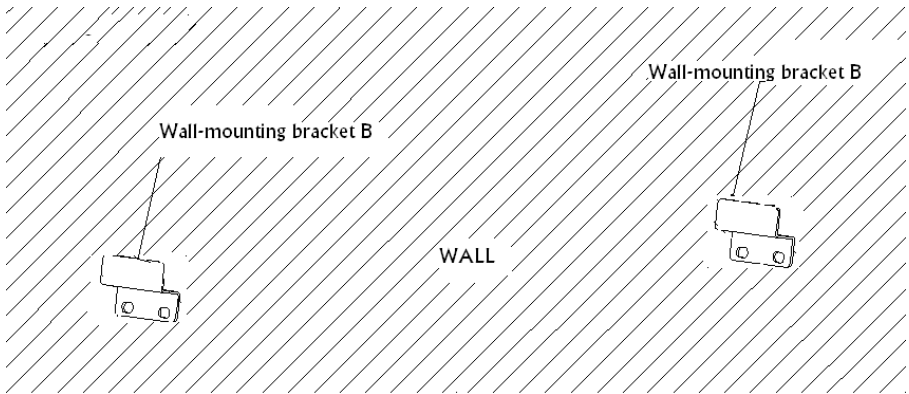
(1) Install two wall-mounting brackets A at the back of the interactive whiteboard (with the four screws at the top of the back of the interactive whiteboard), shown below:



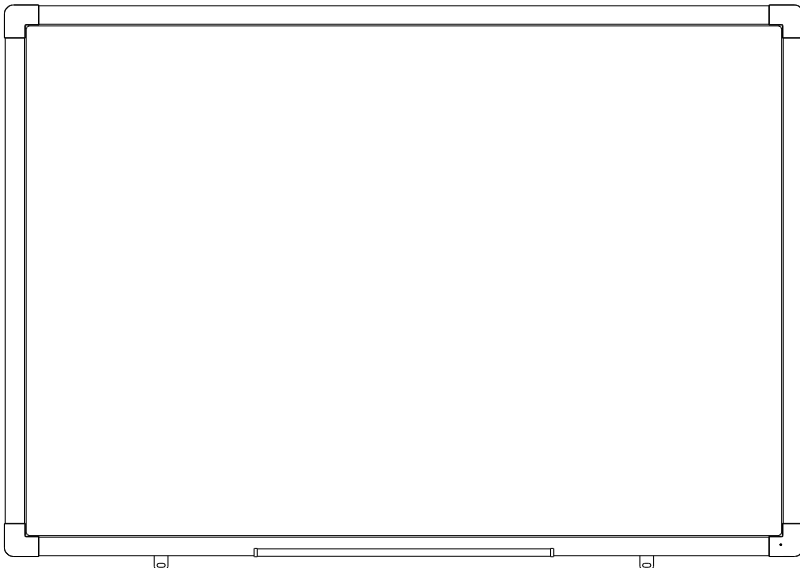
(2) Install two wall-mounting brackets C at the back of the whiteboard (with the two screws at the bottom of the back of the whiteboard), shown below:



Set desired height according to user's preference. Place the 4 stilettos on the wall and screw bolts into each hole to fix the wall-mounting brackets B. Make sure the distance between the two wall-mounting brackets B is fit for hanging the interactive whiteboard. Shown below:

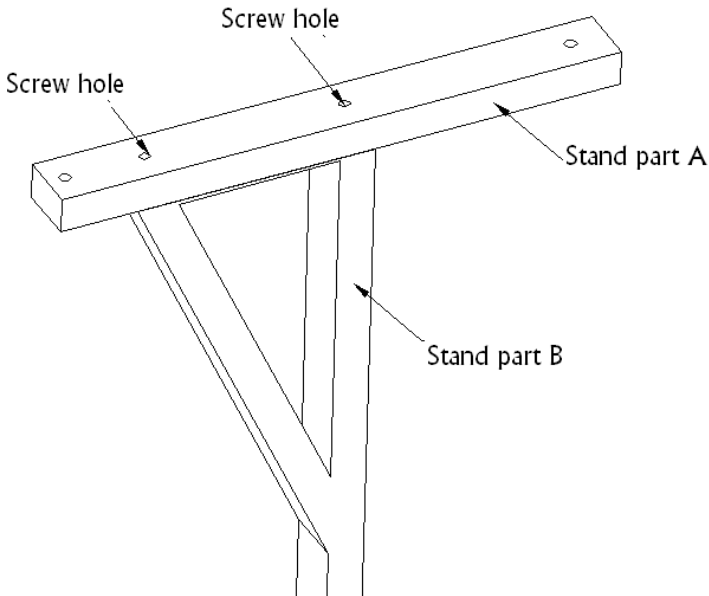


After hanging the interactive whiteboard, place 2 stilettos on the wall according to the actual position and screw bolts into each hole to fix the wall-mounting brackets C. shown below:

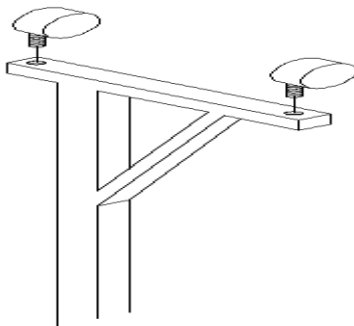


Install White Board on a Floor Stand:

(1) Assemble the stand with screws, shown below:



(2) Lock all four casters in the down position (as shown)



(3) With an assistant's help, hang Interactive whiteboard on the floor stand by lowering the two bolts onto the top hooks and securing the bottom bolts into the bottom hooks. There are five heights for hanging according to user's preferences.

How to Install Software

1. Install Software

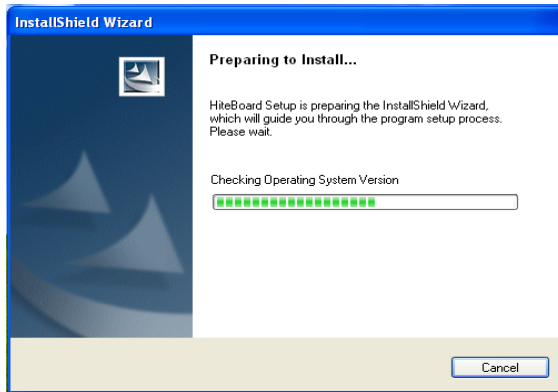
Connect the whiteboard to your computer or laptop using the provided USB cable and insert the Interactive whiteboard CD. Once the USB cable is connected the computer will notify that it has “found new hardware” and the following window will appear:



Pease click “Cancel” and use the following method to install the application software. Once the QOMO Interactive whiteboard CD is placed in the computer’s CD-ROM, the auto run install window will appear.

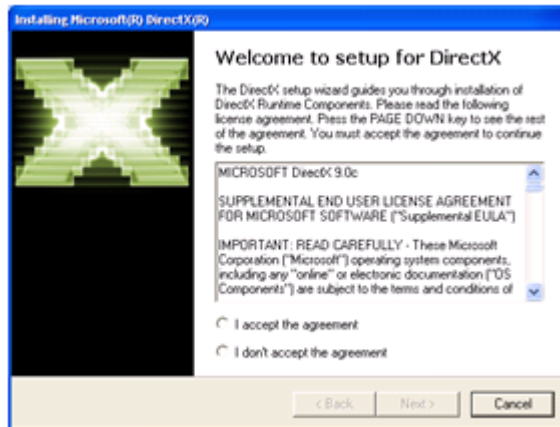


Click **HiteBoard Software** to begin installation



Follow the prompts in the dialog box messages to complete the installation.

Double-click on the **Microsoft DirectX9.0** to install Direct X9.0



Follow the prompts to install DirectX9.0. Once the installation of the DirectX and whiteboard Setup is complete, click 'Yes' to restart your computer.

Once the software is installed, an icon will appear in the computer's windows system tray.



indicates a connection has been made to the whiteboard.



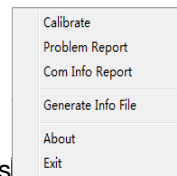
indicates no connection has been made, please check the hardware connection and USB driver.

Note: Under Windows XP, the USB driver may need to be reinstalled if the connection to another USB port. Please press “Next” to search USB driver automatically.

Double-click on the



icon to populate the options



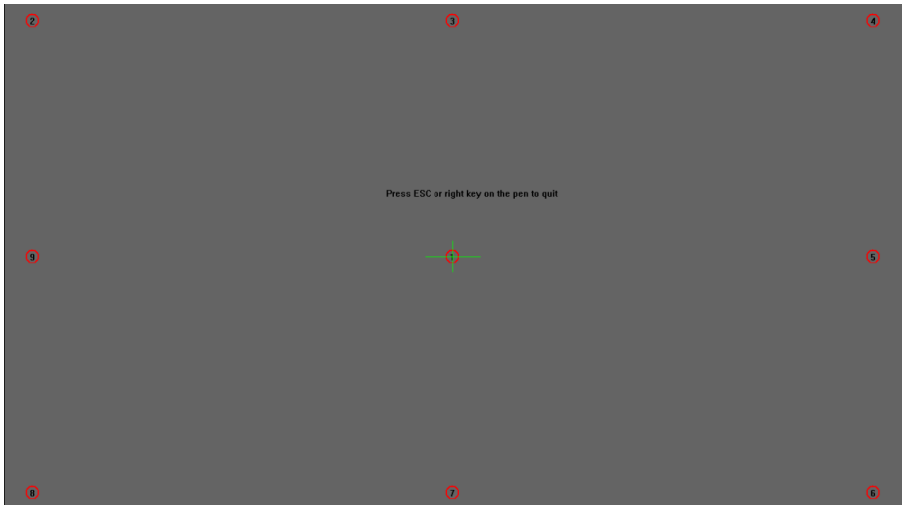
menu.

‘About’ Option



The dialog box displays the driver version and hardware version.

Calibrating




Click the center of the flashing “+” with pen to make four “+”s stop flashing. This is a successful calibration. And according to the operation to calibrate the other “+” one by one to finish the Whiteboard calibration.

★Tips:

1. When you use finger to calibrate, it will cause inaccurate calibration, please use pen to calibrate to get accurate calibration.
2. Wrong calibration may cause whiteboard cannot work, please do calibration again.
3. During calibration, click the key "ESC" to will cancel the calibration operation.
4. There is hotkey calibration process if your whiteboard has hotkey, please do calibration as screen prompt.

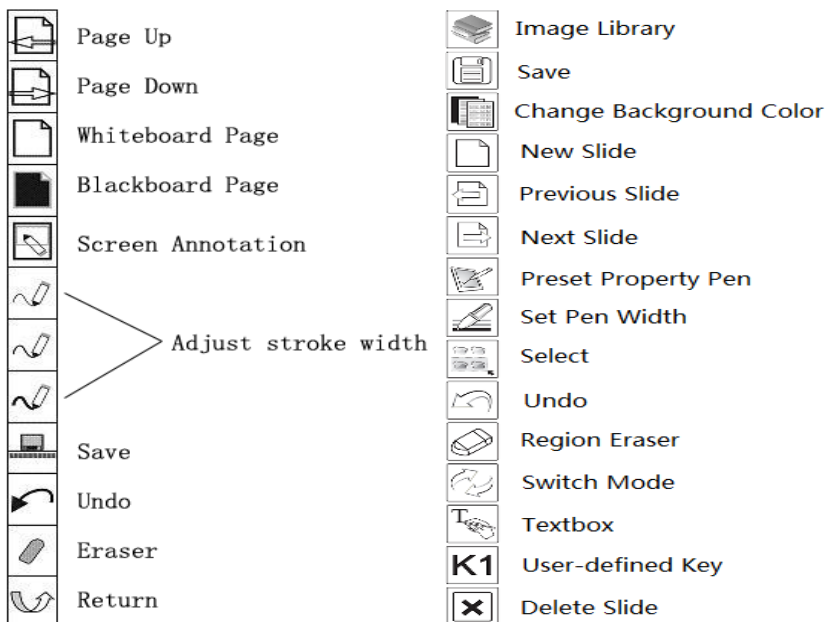
Exit

When the Interactive whiteboard is no longer needed, click “Exit” to exit the program and stop whiteboard. When you want to use whiteboard again,

please click  to open whiteboard server program from the start menu and connect the whiteboard.

2. Hot Keys

Some model whiteboard has screen hotkey, it has two types shown as below, hotkey area is not display area, but you can touch hotkey to operate, the function will be started when you click in the area of every hotkey.



3. Writing pens and eraser

- ★ There are three colored writing pens and one eraser on pen tray, from right to left; it is red pen, black pen, and blue pen. They have different priority, eraser has first priority, then is blue pen, black pen and red pen. When you pick up a pen, this pen color is current color, when you pick up several pens, the current color will be the color of pen that has first priority, and you can also select pen color in software toolbar when you pick up pen. Please put the pen in its corresponding slot on pen tray.
- ★ Writing with single-finger, moving with multi-finger.

How to Use Annotation Software

Please refer to the <Application Software Instruction> on the CD for details.

Troubleshooting Guide

Problem	phenomenon	May caused by	Try the following
Whiteboard does not work	There is no server icon on system tray	Does not start server program	Start server program
		Has not install server program	Install server program
	The server icon is in red	The whiteboard and computer does not connect	Connect whiteboard and computer with USB cable
		Whiteboard cannot pass self test, so caused whiteboard cannot connect	Check if there are object pressed on whiteboard surface, please move it away
		Something wrong with driver	Uninstall driver and install again
	The server icon is in green	Wrong calibration	Calibrate again
When calibrating, some calibration point can not been seen	No green crossed cursor on whiteboard	There are something wrong with projector adjustment so that part of image is outside the whiteboard projected area	Adjust projector
Cannot write	Mouse can move but no writing stroke	Software is not in writing mode	Shift to writing mode and set mouse status as pen
	Mouse can move in desktop operation mode but cannot write under writing mode	The selected stroke color is same to or similar to the background color	Change stroke color or background color

Pen can operate, but calibration has deviation	Whiteboard pen is accurate in some place while have big deviation in some other place	Calibration is not accurate	Calibrate again properly
		Projection image is not proper	Adjust projector
Pen can write, but operation speed is slow	Writing stroke don't accord with writing operation and is slow than writing operation	Conflict with anti-virus software such as Rising	Close the monitoring of concerned anti-virus software
		Computer run too many software	Close the software which will not be used at present
		Computer hardware configuration is too low	Contact with professional person to upgrade computer hardware
Something wrong with pen tray	Cannot change pen stroke color when pick up or put down pen	There is dust or other object on pen tray	Clean pen tray or move object away
		Pen tray is loose or does not connect well to whiteboard	Please take off and plug pen tray, fix screws at the bottom of pen tray

Interactive Whiteboard User Tips

When searching for a specific page among many pages, enter the Page Index mode and look up this page quickly on the Page Sorter window. Press the Ctrl+ key combination (↓ 、 ↑ 、 ←) to move/place objects accurately.

To improve the displaying speed, the size of the image in use should be no larger than the size of the screen resolution.

If possible, convert the picture that will be inserted into WMF format first. This operation can improve the displaying speed and reduce distortion when magnifying or shrinking the image.

In order for the image to be displayed on the screen clearly, set the image size to the same size as the screen being displayed. For example: If the screen resolution is 1024×768, the image pixel should be set to 1024×768.

Specifications

	56" Interactive Whiteboard
	QWB56
Technology	Infrared
Touch System	Pen, Wand or Finger
Touchable range	46" x 33" (1159mm x 831mm)
Resolution	1024 x 1024
Response Time	First dot:25ms,continuous dot:8ms
Cursor Speed	120 inches/second
Coordinate Accuracy	3mm
Consumer Current Active Area Size (Diagonal)	≤75mA 56"
Port	USB
Dimensions	52" x 38" (1331mm x 971mm)
Packing Dimensions	55" x 43" x 8" (1400 x 1100 x 200mm)
Net Weight	31 lbs (14kg)
Gross Weight	48 lbs (22kg)
Software Drivers	Windows 2000/XP/32 bits vista
Accessories	Standard: 3 Interactive Pens (red, black, blue), Eraser, Pen Tray Optional: Floor Stand
Operating Temp	5°F to 122°F (-15°C to 50°C)
Operating Humidity	20~90%
Storage Temp	-40°F to 122°F (-40°C to 50°C)
Storage Humidity	10~95%

	78" Interactive Whiteboard
	QWB200
Technology	Infrared
Touch System	Pen, Wand or Finger
Touchable range	65" x 46" (1653mm x 1159mm)
Resolution	1024 x 1024
Response Time	First dot:25ms,continuous dot:8ms
Cursor Speed	120 inches/second
Coordinate Accuracy	3mm
Consumer Current Active Area Size (Diagonal)	≤80mA 78"
Port	USB
Dimensions	72" x 51" (1824mm x 1301mm)
Packing Dimensions	80" x 60" x 8" (2040 x 1520 x 200mm)
Net Weight	57 lbs (26kg)
Gross Weight	75 lbs (34kg)
Software Drivers	Windows 2000/XP/32 bits vista
Accessories	Standard: 3 Interactive Pens (red, black, blue), Eraser, Pen Tray Optional: Floor Stand
Operating Temp	5°F to 122°F (-15°C to 50°C)
Operating Humidity	20~90%
Storage Temp	-40°F to 122°F (-40°C to 50°C)
Storage Humidity	10~95%

	88" Interactive Whiteboard
	QWB300
Technology	Infrared
Touch System	Pen, Wand or Finger
Touchable range	72" x 52" (1817mm x 1323mm)
Resolution	2048 x 2048
Response Time	First dot:25ms,continuous dot:8ms
Cursor Speed	120 inches/second
Coordinate Accuracy	3mm
Consumer Current Active Area Size (Diagonal)	≤85mA 88"
Port	USB
Dimensions	78" x 58" (1988mm x 1465mm)
Packing Dimensions	80" x 66" x 8" (2204 x 1684 x 200mm)
Net Weight	66 lbs (30kg)
Gross Weight	88 lbs (40kg)
Software Drivers	Windows 2000/XP/32 bits vista
Accessories	Standard: 3 Interactive Pens (red, black, blue), Eraser, Pen Tray Optional: Floor Stand
Operating Temp	5°F to 122°F (-15°C to 50°C)
Operating Humidity	20~90%
Storage Temp	-40°F to 122°F (-40°C to 50°C)
Storage Humidity	10~95%

	105" Interactive Whiteboard	
	QWB100WS	
Technology	Infrared	
Touch System	Pen, Wand or Finger	
Touchable range	84" x 46" (2145mm x 1159mm)	
Resolution	4096 x 4096	
Response Time	First dot:25ms,continuous dot:8ms	
Cursor Speed	120 inches/second	
Coordinate Accuracy	3mm	
Consumer Current Active Area Size (Diagonal)	≤100mA	105"
Port	USB	
Dimensions	91" x 51" (2317mm x 1301mm)	
Packing Dimensions	99" x 59" x 7" (2522 x 1500 x 170mm)	
Net Weight	66 lbs (30kg)	
Gross Weight	88 lbs (40kg)	
Software Drivers	Windows 2000/2003/XP	
Accessories	Standard: 3 Interactive Pens (red, black, blue), Eraser, Pen Tray Optional: Floor Stand	
Operating Temp	5°F to 122°F (-15°C to 50°C)	
Operating Humidity	20~90%	
Storage Temp	-40°F to 122°F (-40°C to 50°C)	
Storage Humidity	10~95%	

Technical Support

How to Reach QOMO:

By Phone

Call us at 1-866-990-QOMO. Our expert personnel provide technical assistance from 9:00AM through 5:00PM Eastern Standard Time, Monday through Friday. Please gather the following information before calling:

- Product model name(s) and numbers
- Product serial number(s)
- Detailed and specific questions

Online

Technical support is also available online at QOMO's web site at www.qomo.com. You can enter your questions and concerns through our online form. Or you can email us at info@qomo.com.